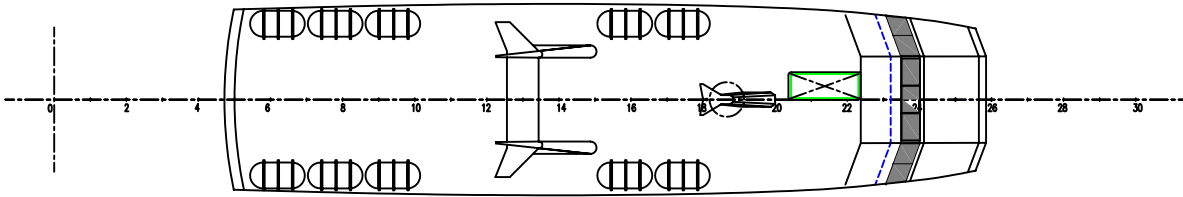
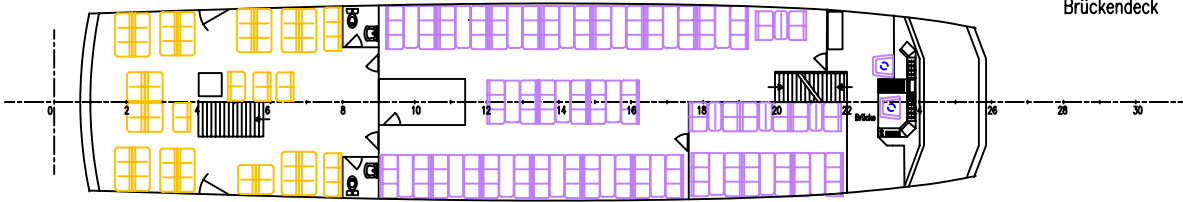


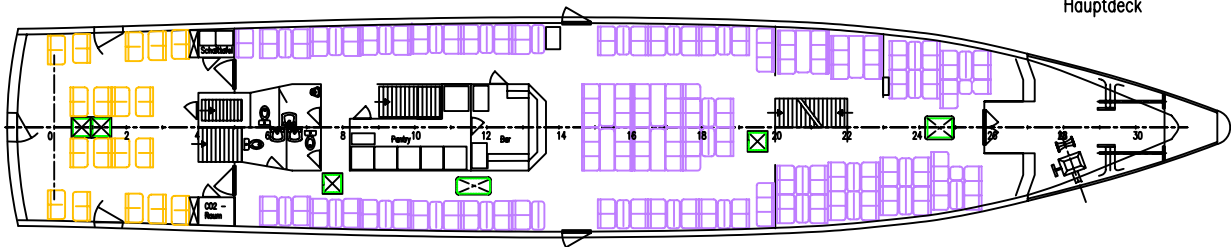
Peildeck



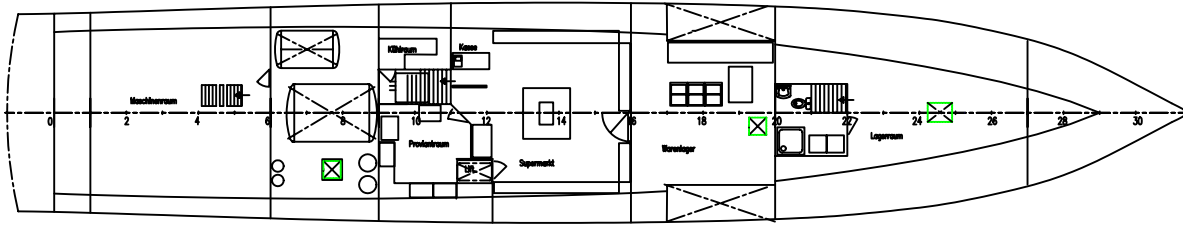
Brückendeck



Hauptdeck



Innenboden



Hauptabmessungen

Länge ü. A	41.60	m
Länge pp	36.60	m
Breite a. Spt	7.70	m
Breite max.	8.00	m
Tiefgang	1.35	m

Dipl.-Ing. Uwe Clausen Am Mittelburgwall 32 D-25840 Friedrichstadt		Adler Schiffe Insel- und Halligreederei Sven Paulsen D-25980 Westerland / Sylt
Projekt No.:	98531	<b>ADLER EXPRESS</b> Generalplan
Datum:	04.04.1998	
Bearbeiter:	Herr Clausen	
Zeichnung-No.:	985310010.01	